




**OFFICE OF THE DIRECTOR/PRINCIPAL  
GOVERNMENT COLLEGE OF PHARMACY, ROHRU  
TEHSIL ROHRU, DISTT. SHIMLA-171207, HIMACHAL PRADESH**  
Recognized by PCI & AICTE; Affiliated to Himachal Pradesh Technical University,  
Hamirpur  
Telefax: 01781241306

**Govt. College of Pharmacy, Rohru  
District Shimla, Himachal Pradesh  
DVV Clarification  
Supporting Documents for 6.5.2**


**Feedback analysis and action taken report**

  
Director/Principal  
Govt. College of Pharmacy Rohru  
Disstt. Shimla HP-171207

## STUDENT FEEDBACK ANALYSIS

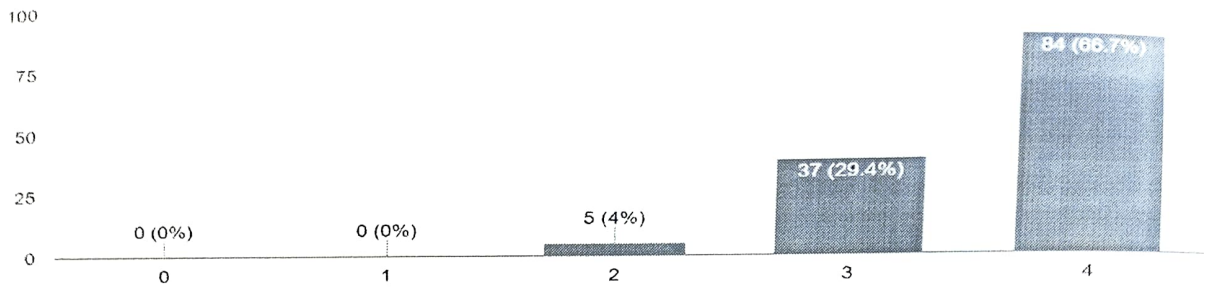
0                      1                      2                      3                      4

Not Satisfactory                                    Excellent

  
Director/Principal  
Govt. College Of Pharmacy  
Rohru Distt. Shimla H.P.

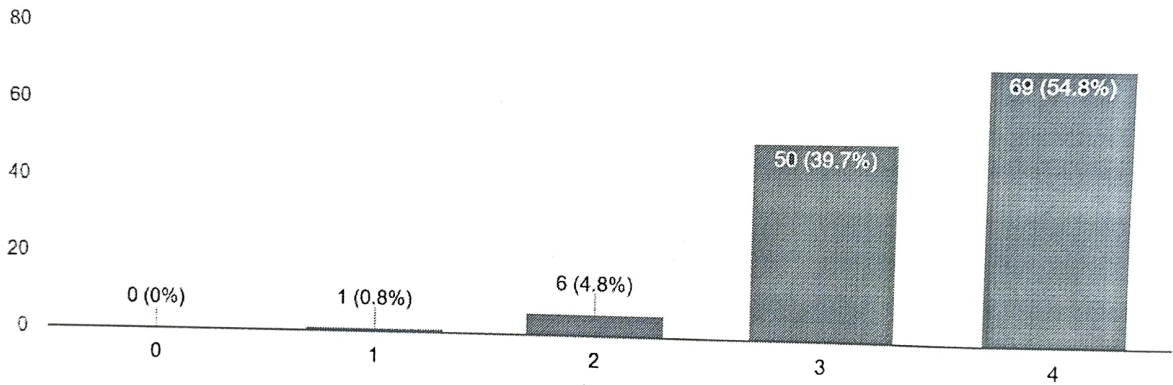
### Discipline and decorum of the college

126 responses



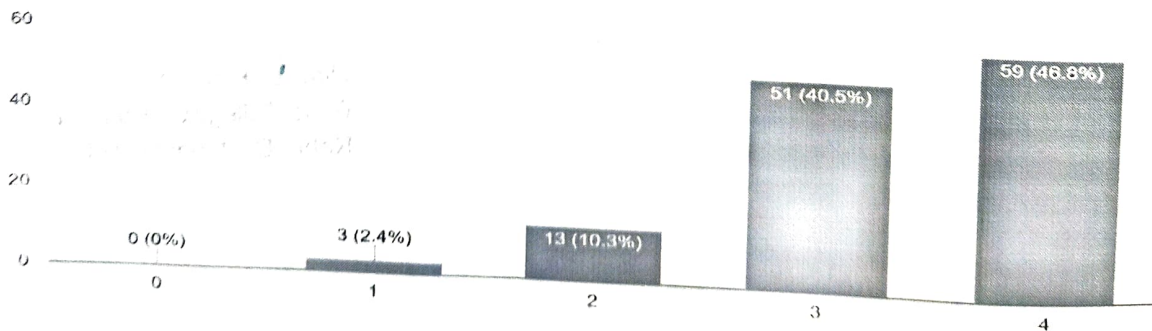
### Academic atmosphere of the institute


126 responses



### Student teachers interaction

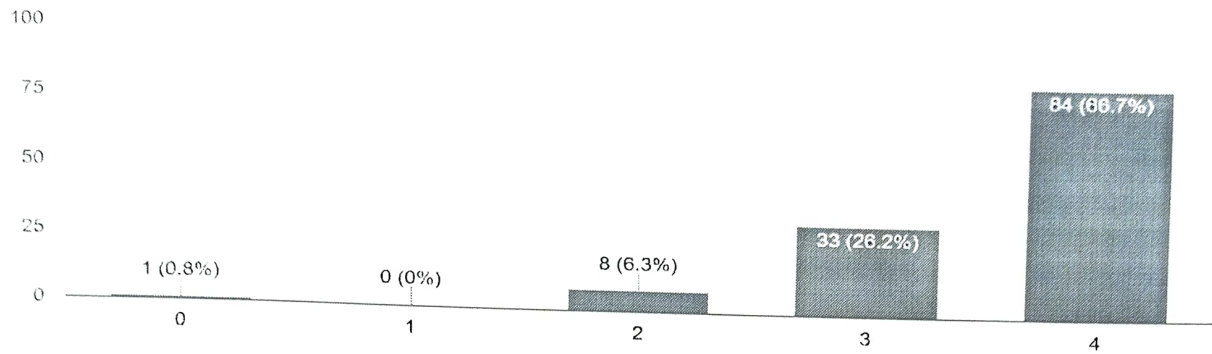
126 responses



  
Director/Principal  
Govt. College Of Pharmacy  
Rohru Distt. Shimla H.P

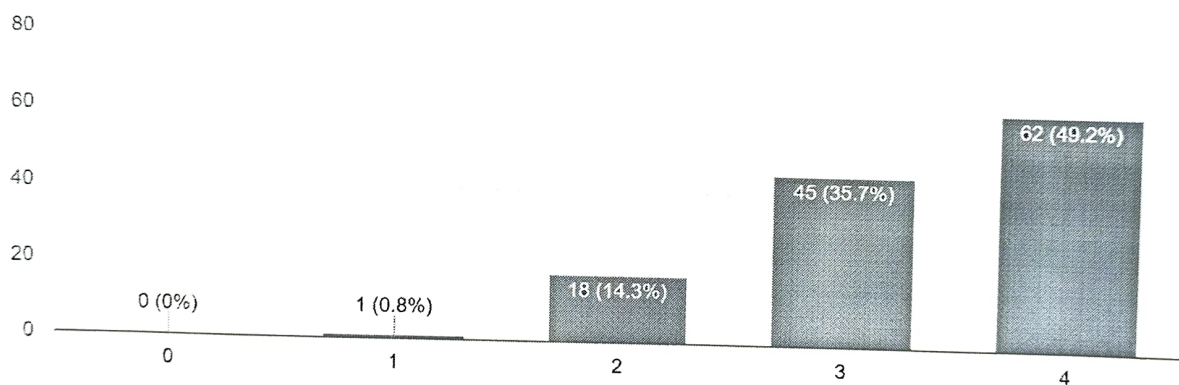
### Availability of books and other materials in library

126 responses



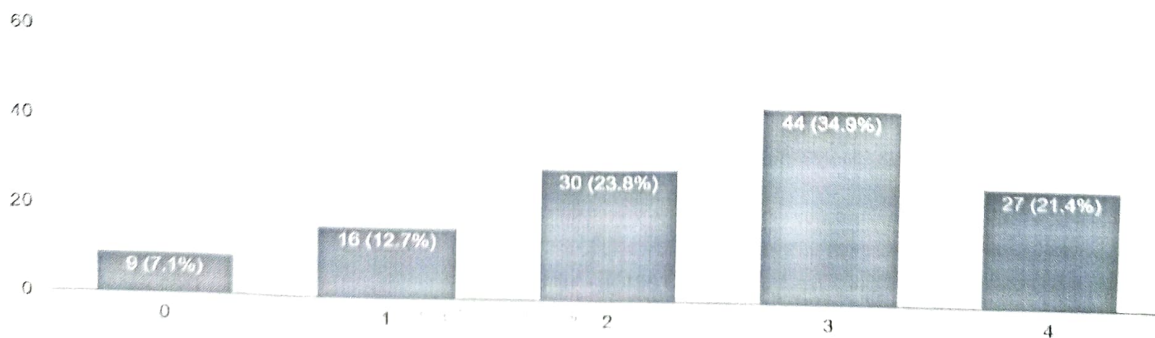
### Cooperation from library/staff.


126 responses



### Extracurricular activities in the college

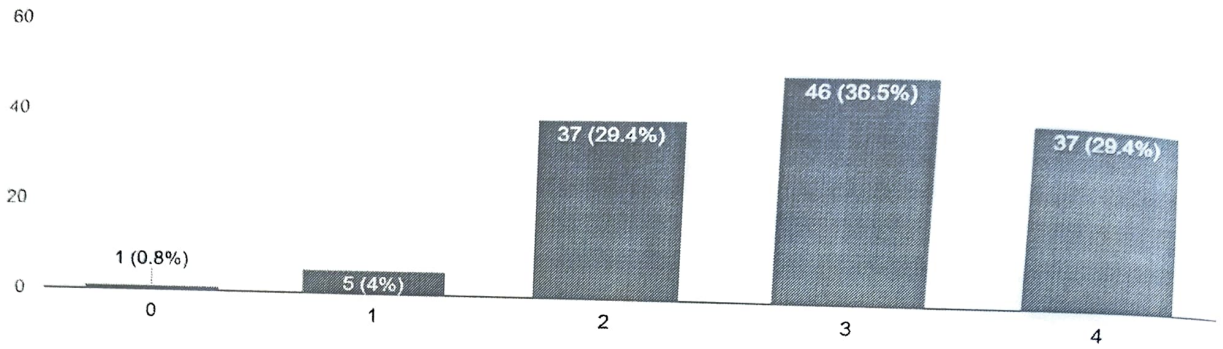
126 responses



  
Director/Principal  
Govt. College Of Pharmacy  
Rohru Distt. Shimla H.P

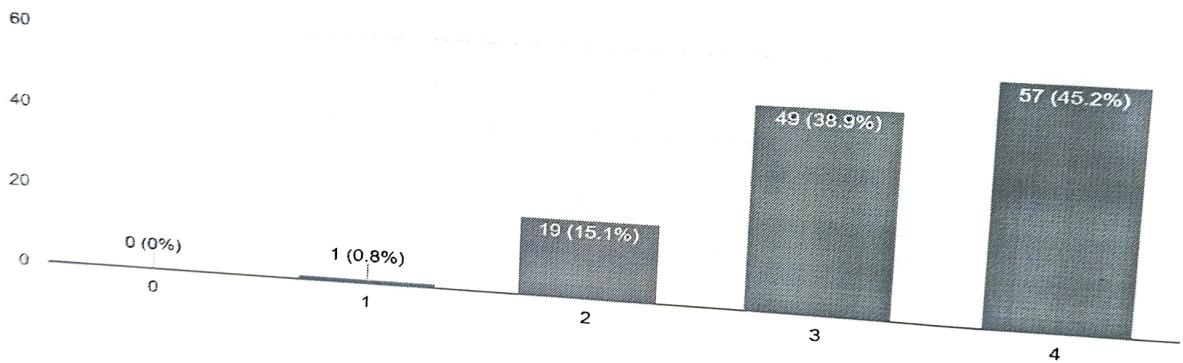
Internet, medical facilities in the college.

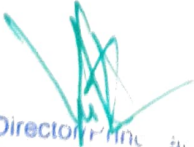
126 responses



Infrastructure facilities

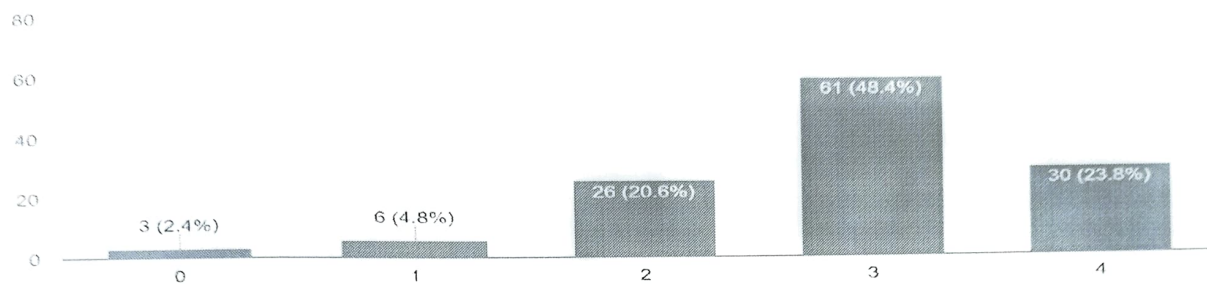
126 responses



  
Director (In-charge)  
Govt. College Of Pharmacy  
Rohru Distt. Shimla H P

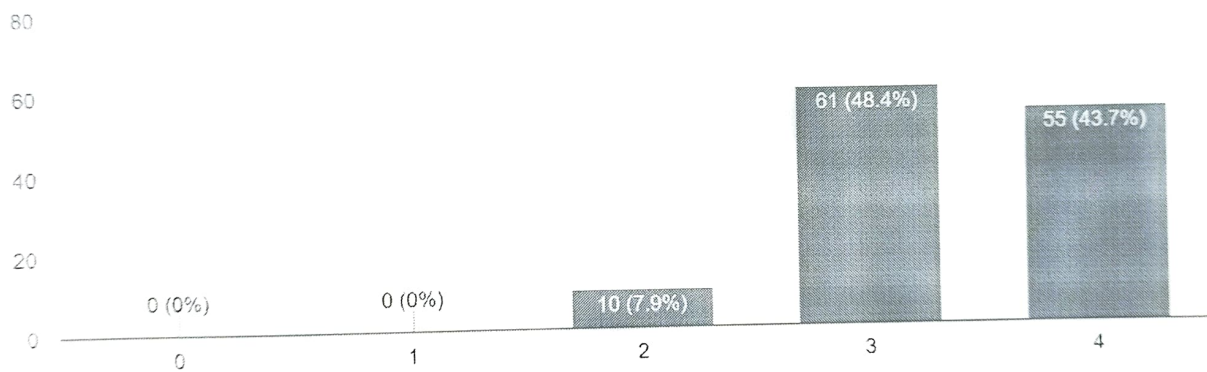
### Placement Assistance

126 responses



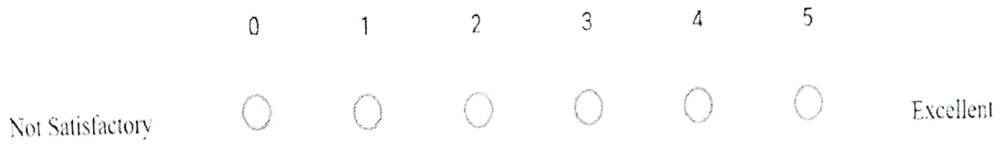
### Overall rating of the institute

126 responses



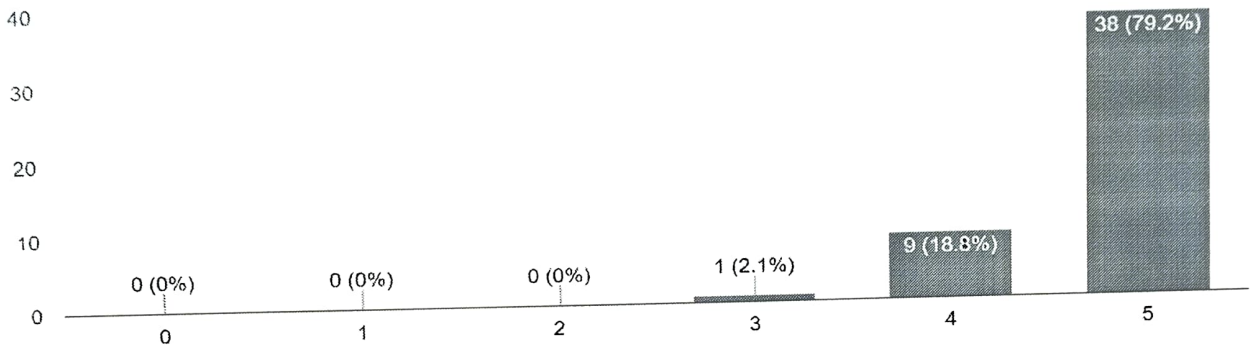
  
Director  
Govt. College of Pharm.  
Rohru Distt. Shimla H.P.

# ALUMNI FEEDBACK ANALYSIS



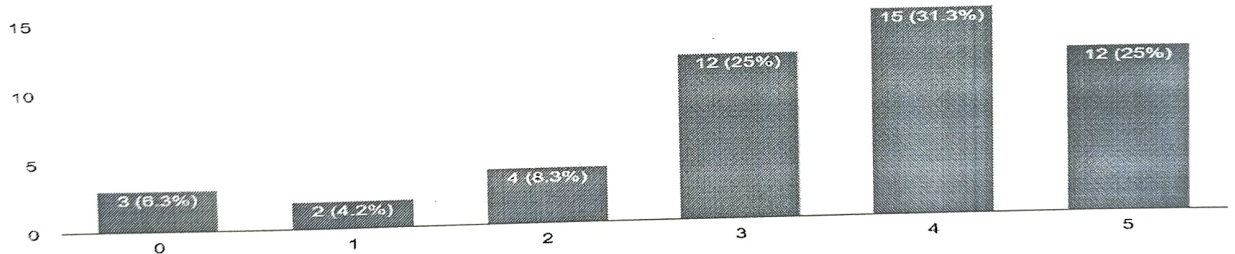
## Academic reputation of the college

48 responses



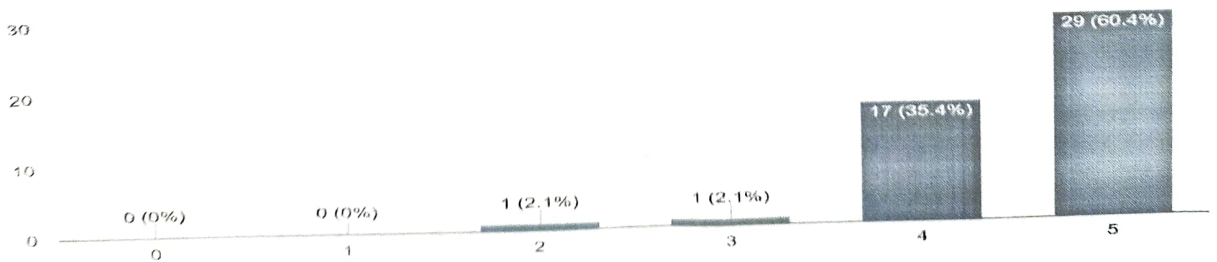
## Placement assistance


48 responses



## Benefits of the course

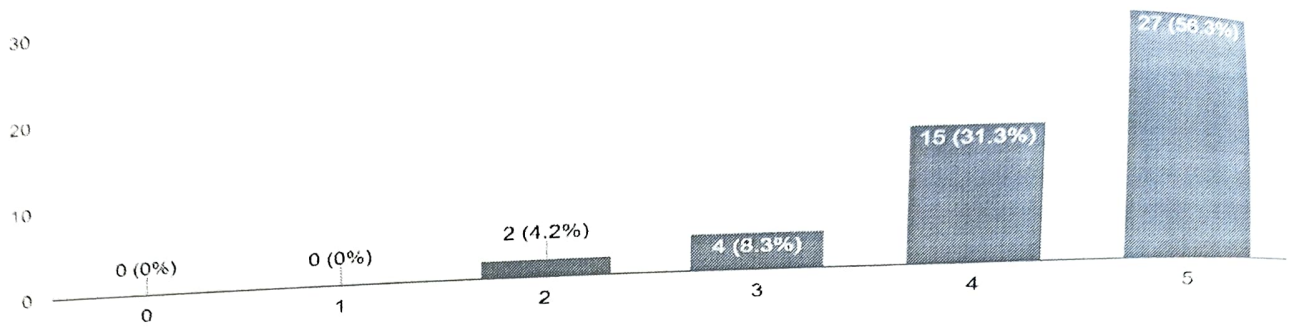
48 responses



  
 Director/Principal  
 Govt. College Of Pharmacy  
 Rohru Distt. Shimla H.P.

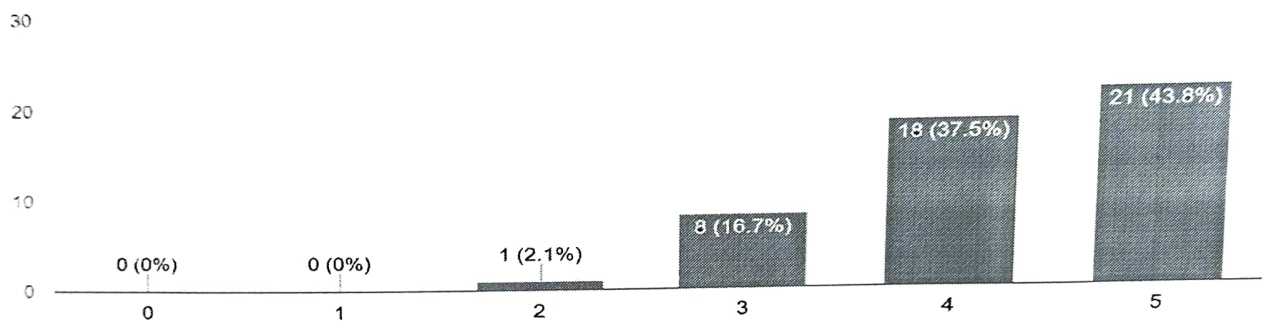
### Skill enhancement by the institute

48 responses



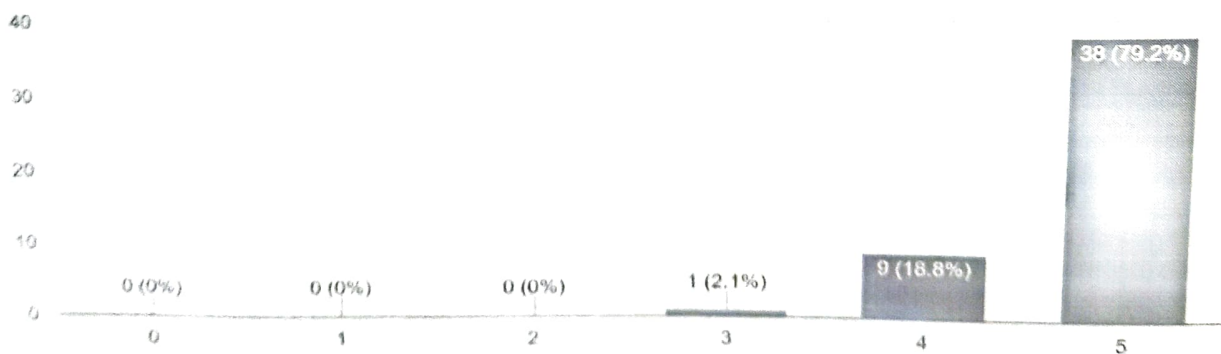
### Relevance of content of curriculum of job

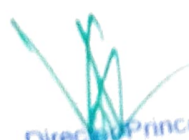
48 responses



### Cooperation from teachers.

48 responses

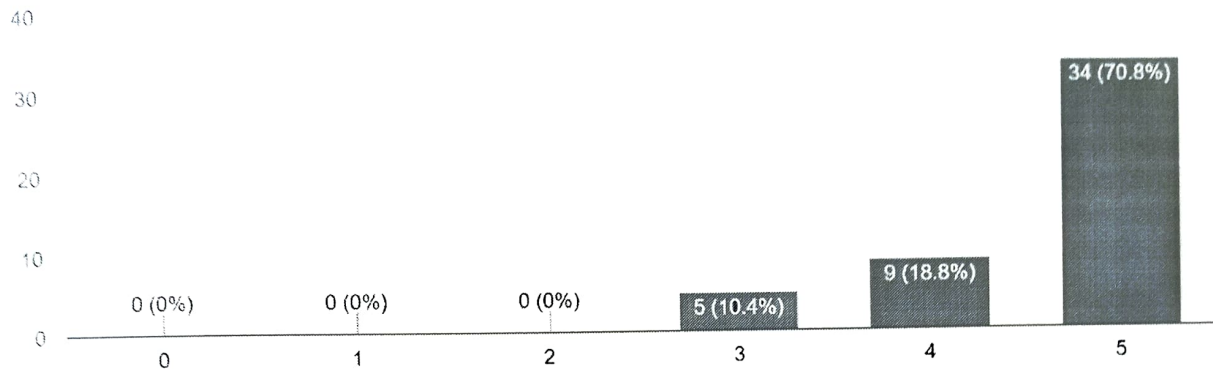


  
Director/Principal  
Govt. College Of Pharmacy  
Rohru Distt Shimla H P



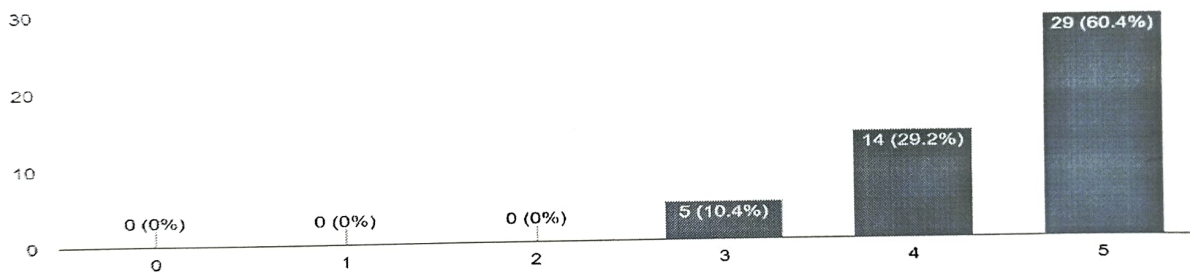
### Cooperation from library/staff.


48 responses



### Infrastructure facilities

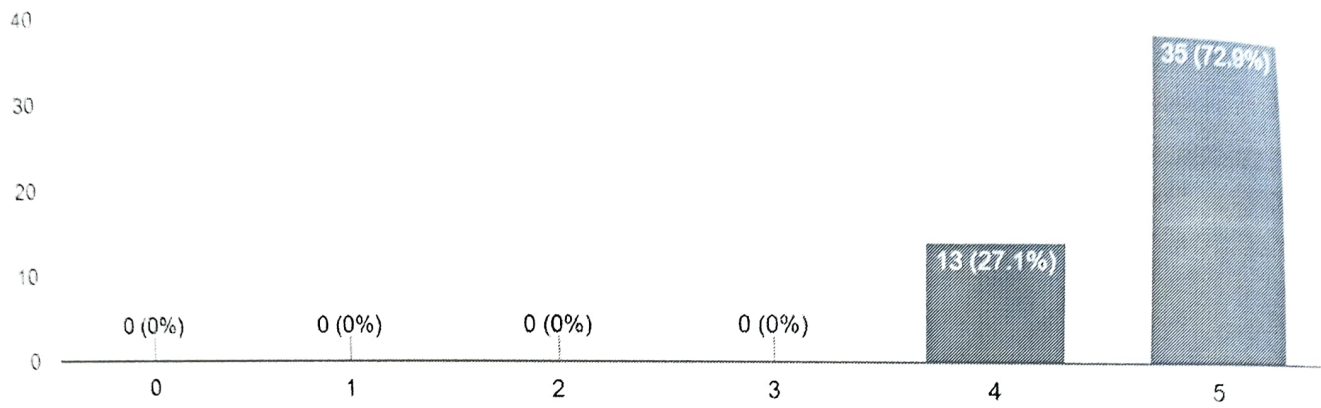
48 responses



  
Director/Principal  
Govt. College Of Pharmacy  
Rohru Distt. Shimla H.P

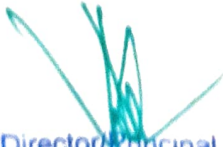
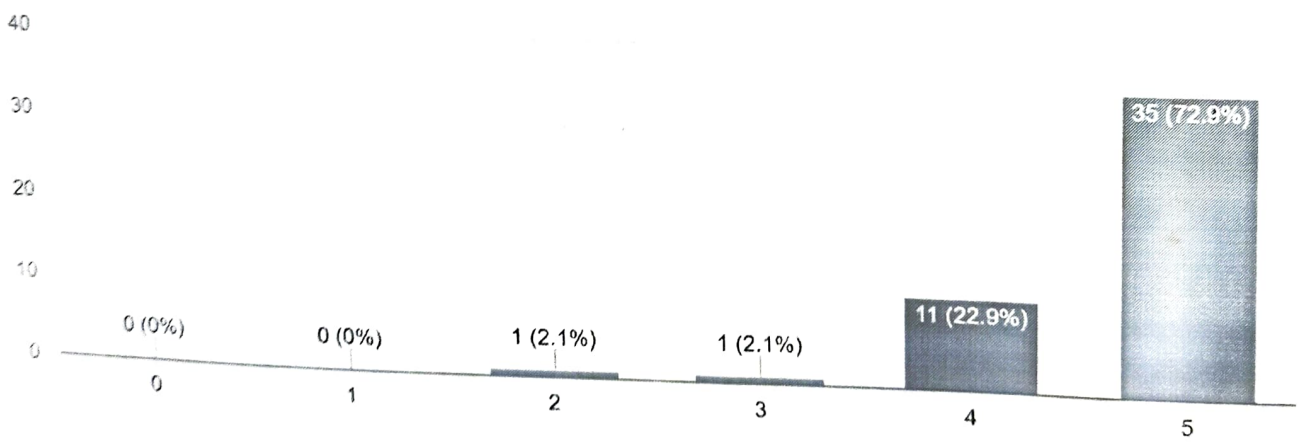
### Involvement of teachers

48 responses



### Overall rating of the institute

48 responses



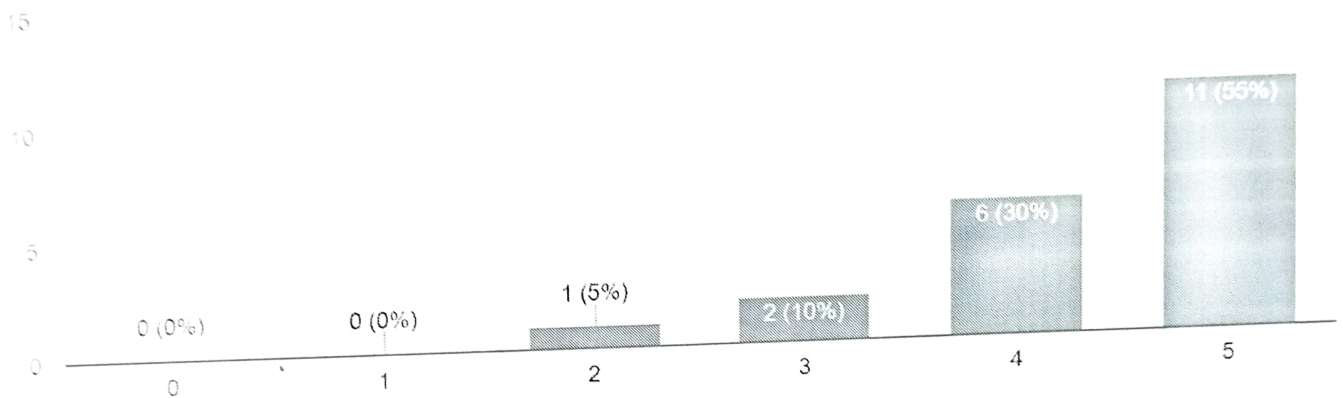
Director/Principal  
Govt. College Of Pharmacy  
Rohru Dist, Shimla H.P.

# ANALYSIS PARENTS FEEDBACK



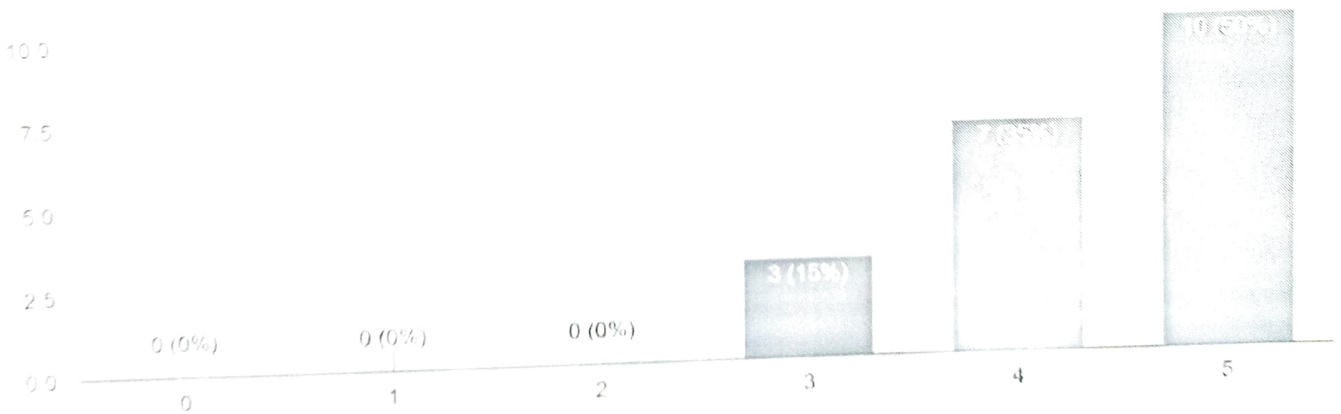
## Teaching/learning system

20 responses



## Adherence to academic calender

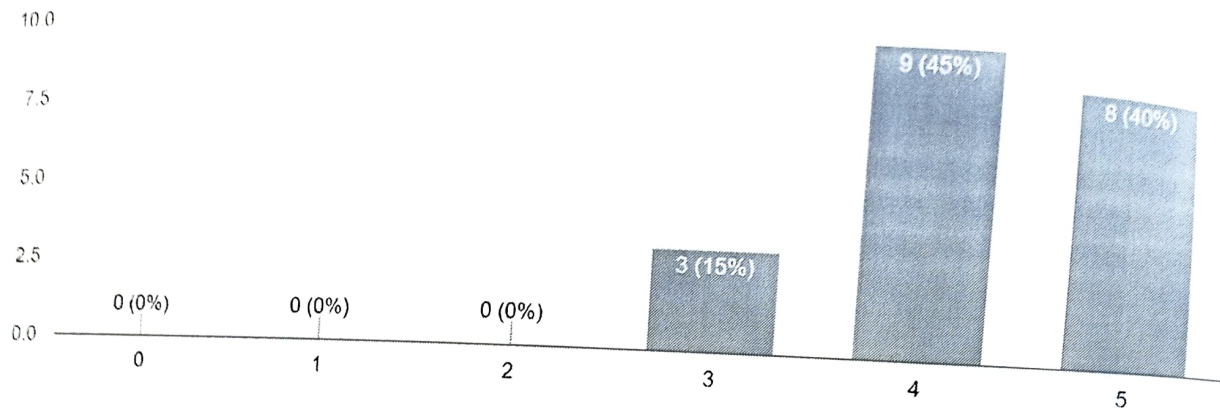
20 responses



  
Director/Principal  
Govt. College Of Pharmacy  
Rohru Distt Shimla H.P.

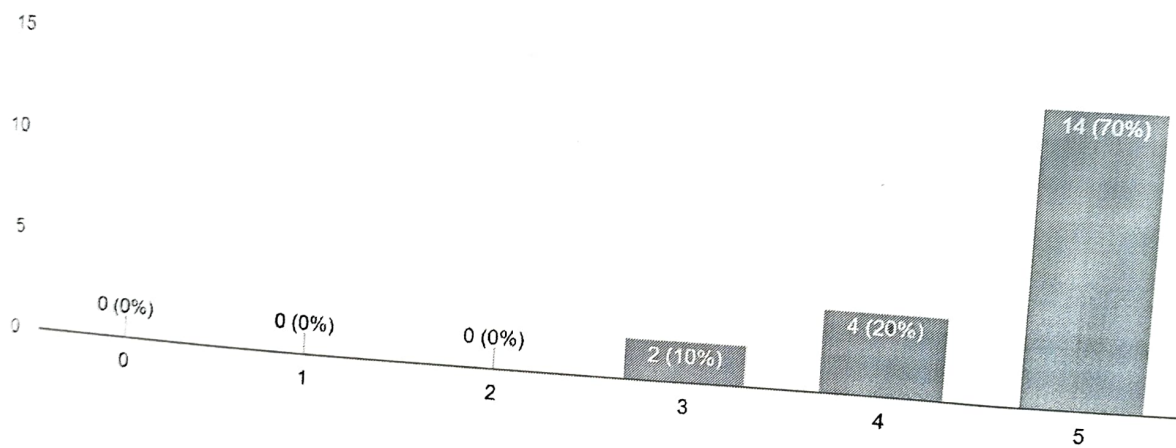
### Student counseling/guidance

20 responses



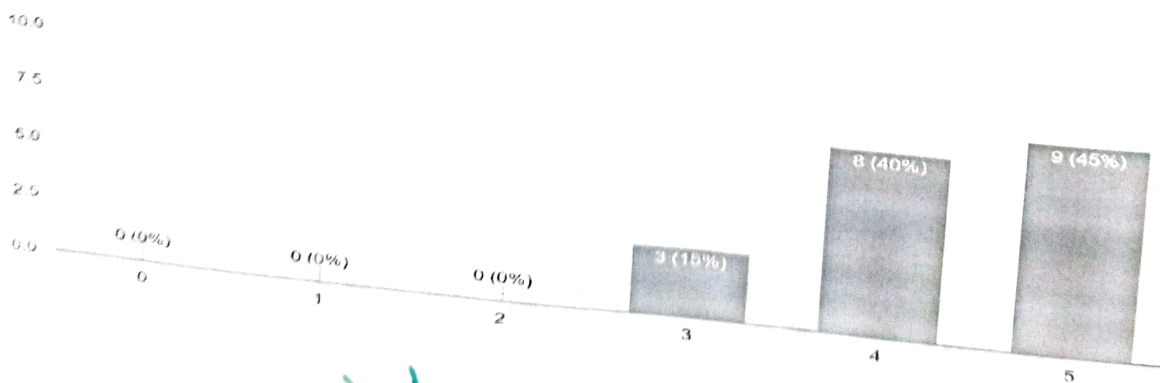
### Admission procedure


20 responses



### Ease of access to raise any grievance.

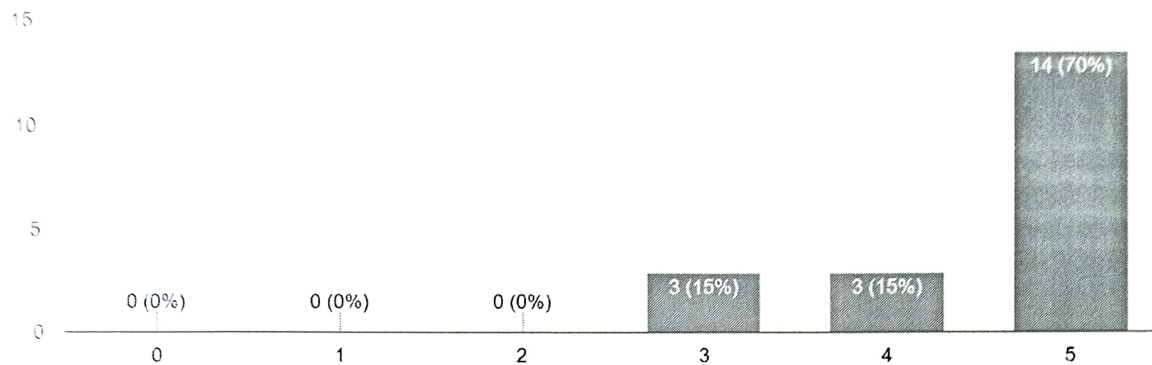
20 responses



  
Director (Princ. In-charge)  
Govt. College Of Pharmacy  
Rohru Distt. Shimla H.P

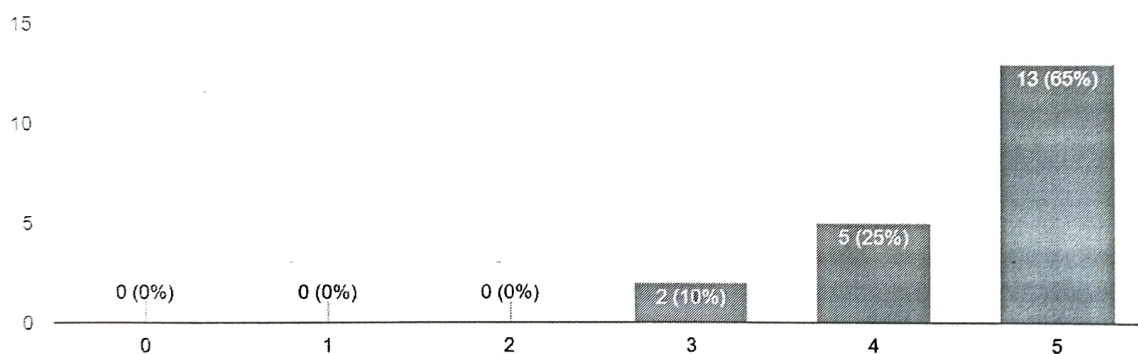
### Overall discipline

20 responses



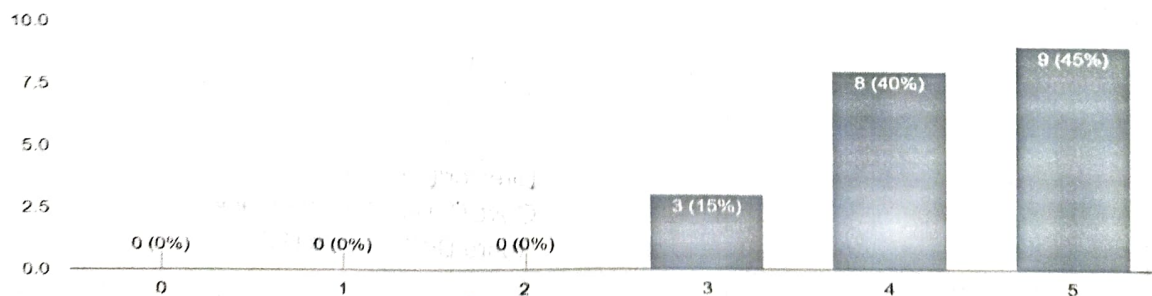
### Overall mentoring


20 responses



### Grievance redressal

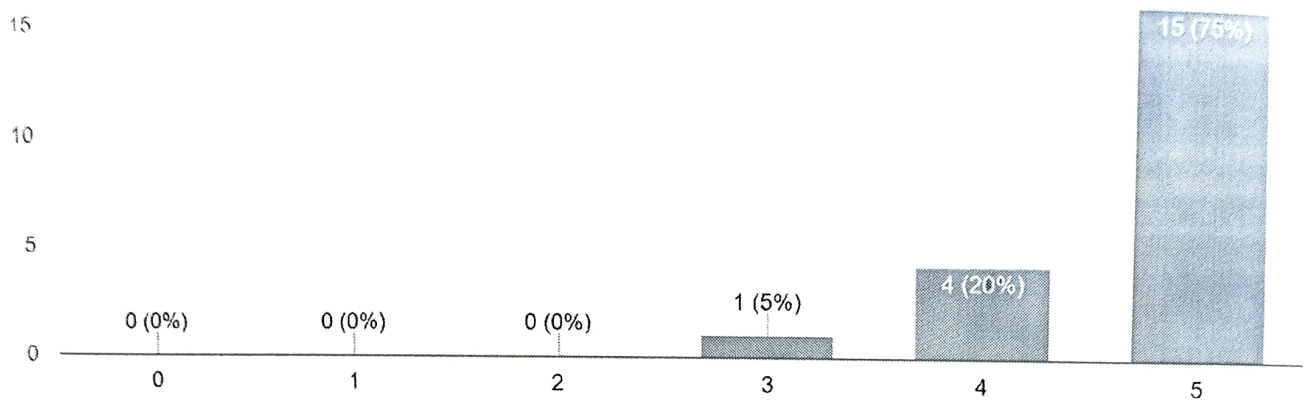
20 responses



  
Director/Principal  
Govt. College Of Pharmacy  
Rohru Dist. Shimla H P

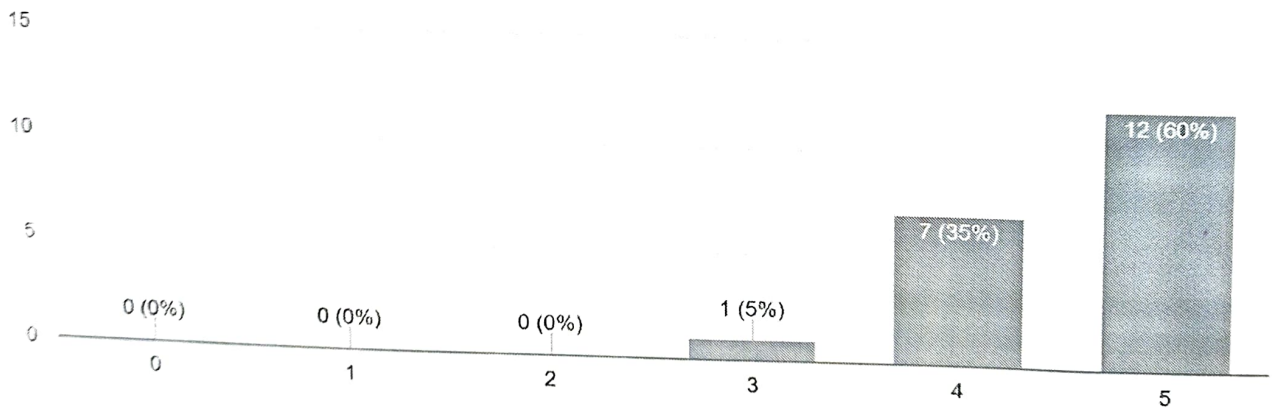
### Academic infrastructure of college

20 responses



### Overall rating of the institute

20 responses

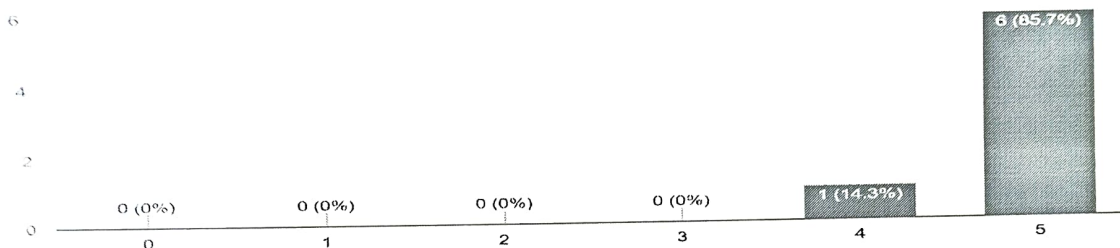


Director/Principal  
Govt. College Of Pharmacy  
Rohru Dist. Shimla H.P.

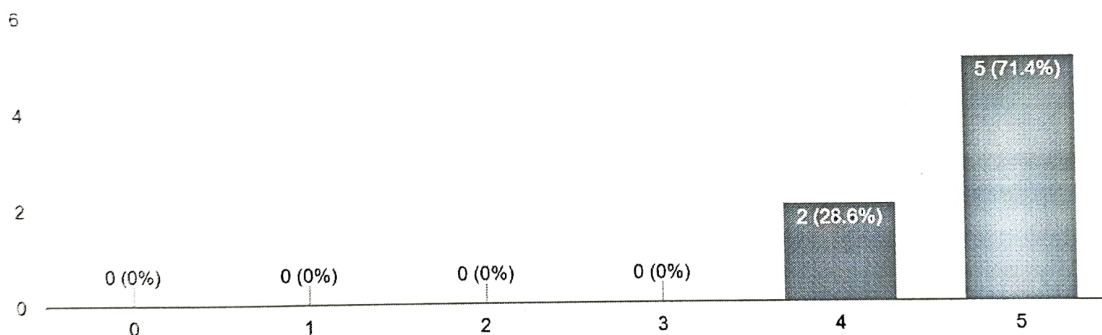
# ANALYSIS OF FACULTY FEEDBACK



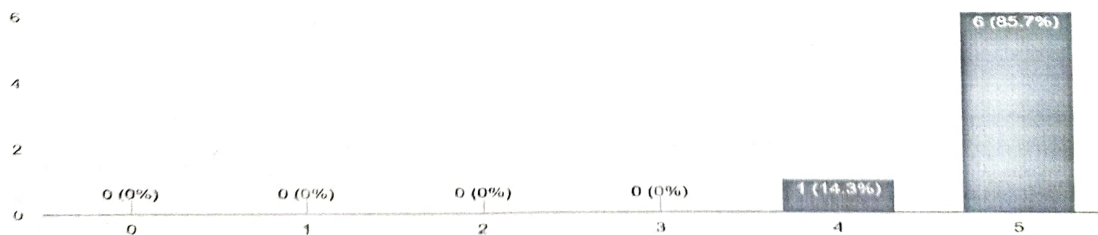
Working atmosphere/culture in the institute  
7 responses



Grievance redressal by the head of institute  
7 responses



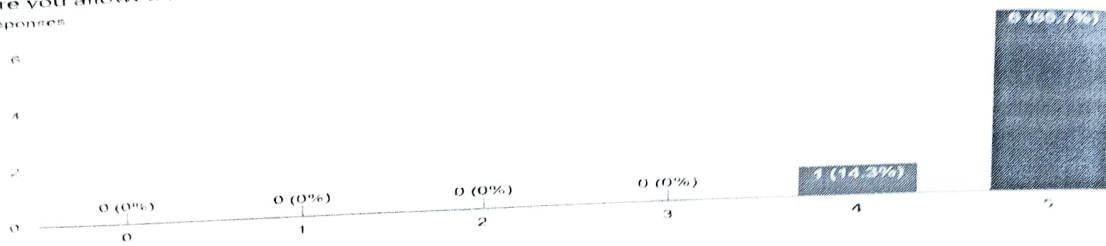
Overall discipline/decorum of institute  
7 responses



*[Handwritten Signature]*  
 Director/Principal  
 Govt. College Of Pharmacy  
 Rohru Distt. Shimla H.P

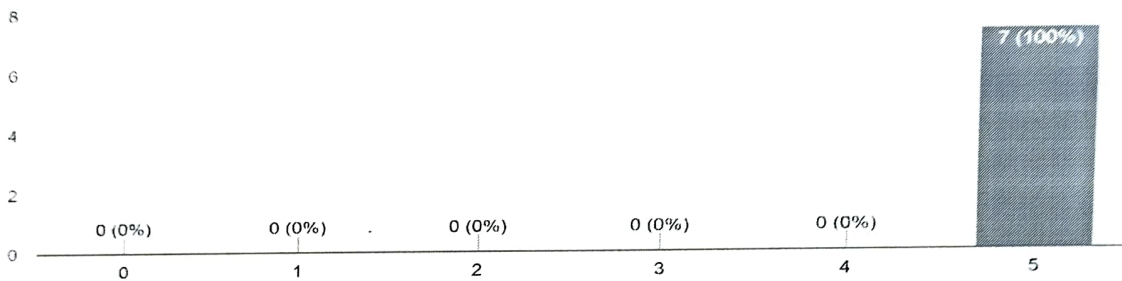
Were you allowed leaves/other benefits as per your rights

7 responses



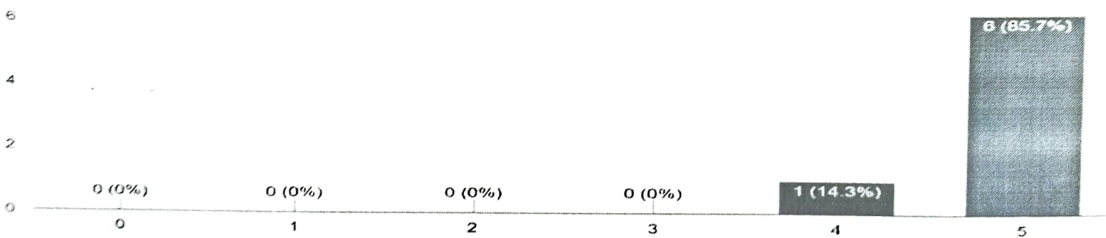
Freedom to use new tools/techniques/machinery

7 responses



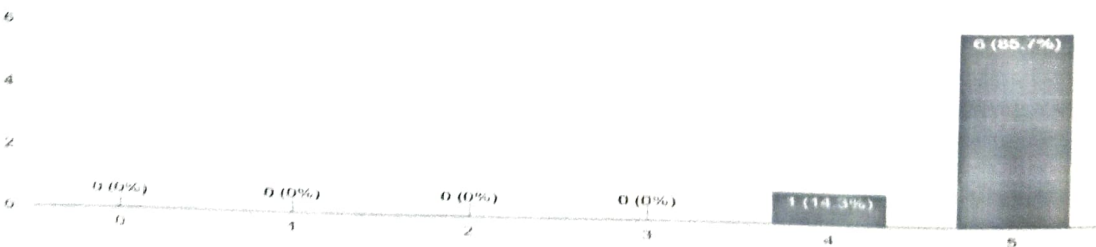
Level of engagement

7 responses



Overall experience of stay/service

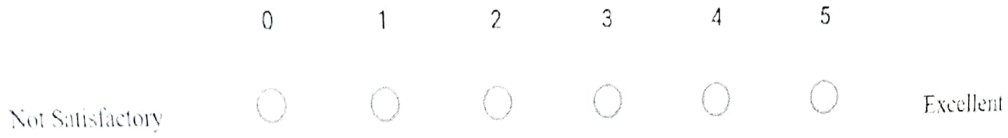
7 responses



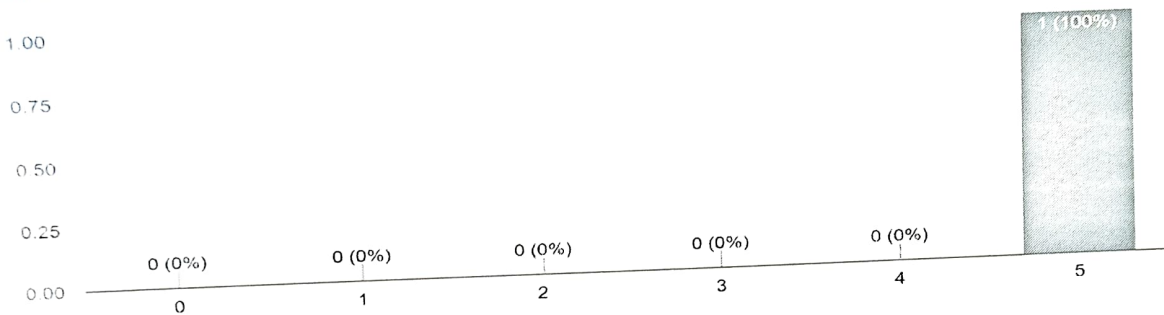
  
Director/Principal  
Govt. College Of Pharmacy  
Rohru Dist. Shimla H.P.



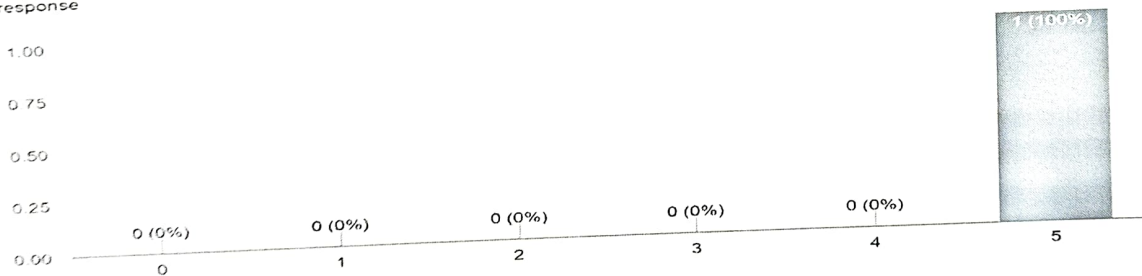
# ANALYSIS EMPLOYER FEEDBACK



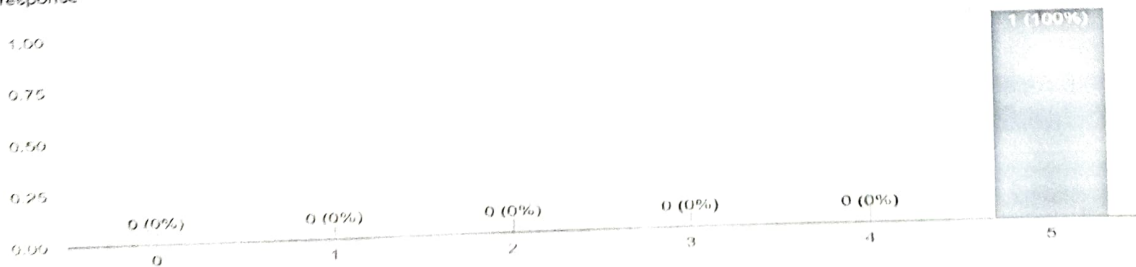
Academic output of the institute  
1 response




Performance of institute in extracurricular activities  
1 response



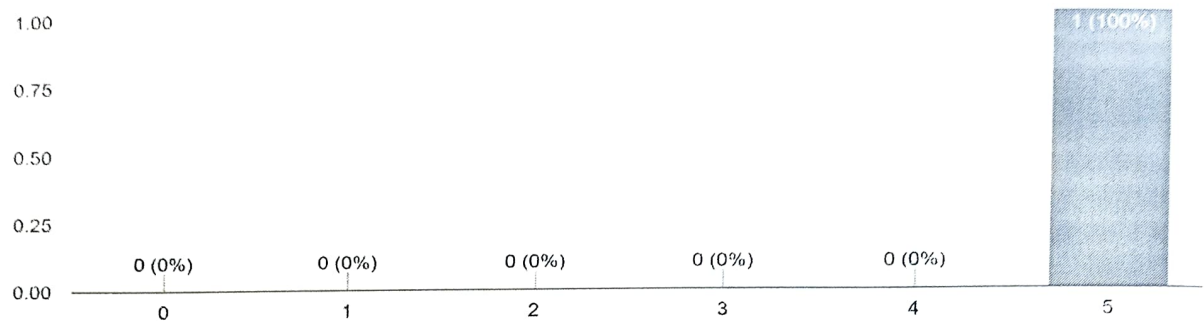
Implementation of official orders by the institute  
1 response



  
 Director/Principal  
 Govt. College Of Pharmacy  
 Rohru Distt Shimla H P

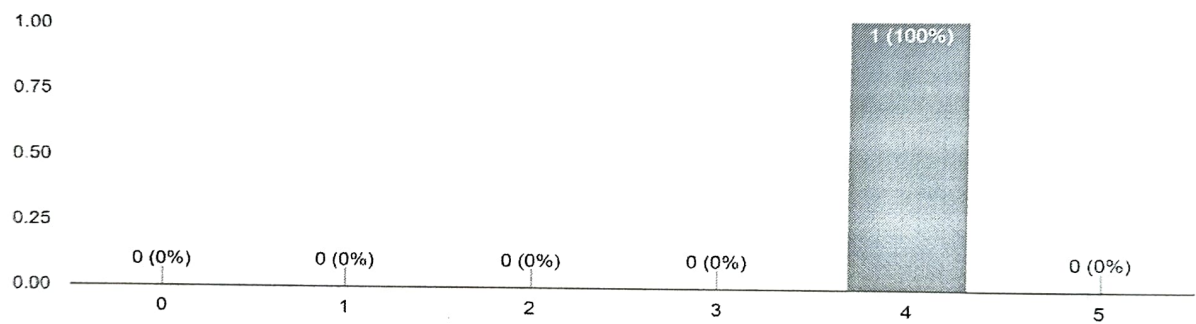
### Exposure to the students by the institute

1 response



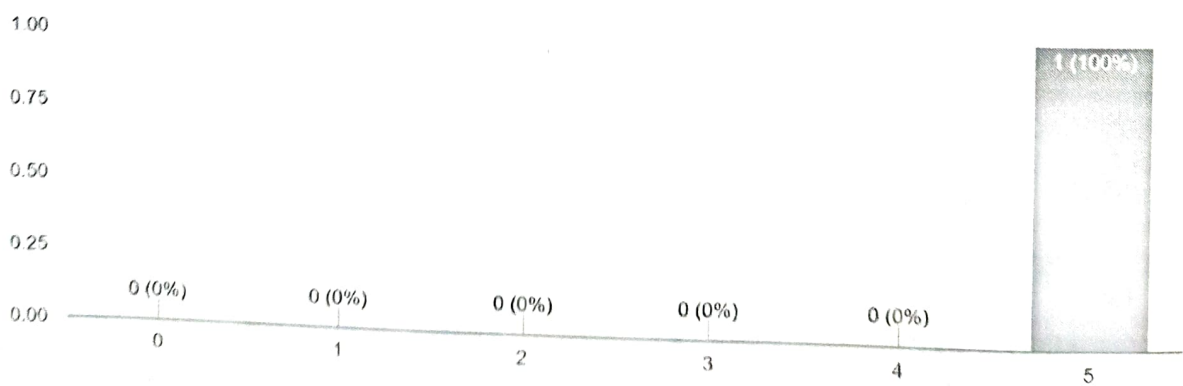
### Placement of the institute


1 response



### Grievances redressal by the institute/ if any

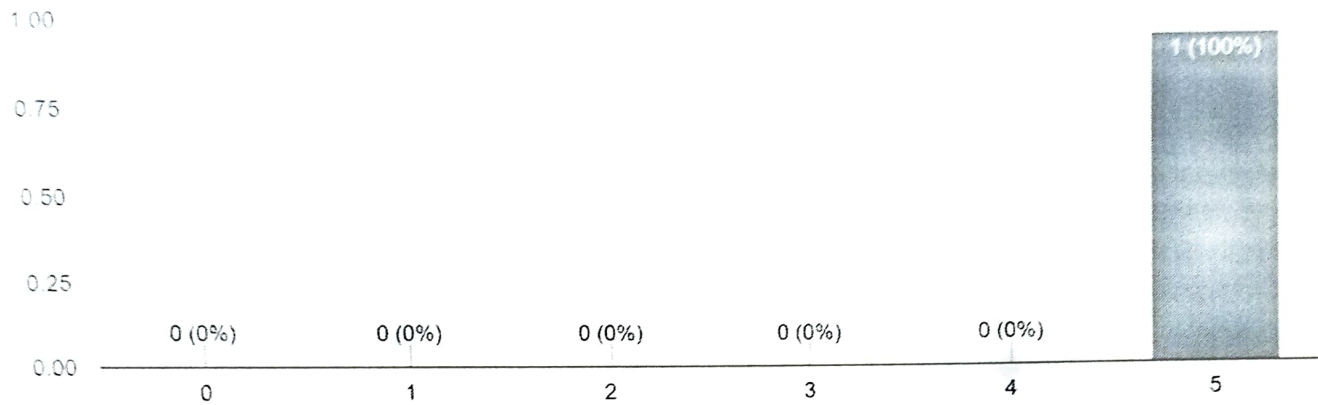
1 response



  
Director/Principal  
Govt. College Of Pharmacy  
Rohru Distt. Shimla H.P.

### Overall image/reputation of the institute

1 response



Director/Principal  
Govt. College Of Pharmacy  
Rohru Distt. Shimla H.P

To  
The Director/Principal,  
Government College of Pharmacy Rohru,  
Shimla, H.P.



Taq (18AC)

22/11/2022

**Sub: Regarding action taken report of feedback analysis.**

**Respected Sir,**

With due regards, it is submitted that the feed-back survey of students, alumni, parents, faculty and employer has been conducted in the regular manner. The feedback analysis report is also enclosed for your information please. The action-taken on feedback grievances is as under: -

Sr. No.	Name of feedback conducted	Question	Grade/Percentage	Action taken	
1.	Student Feedback	Student-teachers interaction	2/10.3	Base on the feedback, several measures were taken: 1. An exhaustive orientation program for first semester was planned, and extended more than a week. 2. During tutorial classes special doubts clearing session of students were planned. 3. Teachers were directed to conduct special counselling session for students.	
4.		Cooperation from library staff	2/14.3	In this context, the message was conveyed to library staff to strictly implemented the library guidelines and maintain the ambience of library for academic activities.	
5.		Extracurricular curricular activities in the college	0 & 1/7.1 & 12.7	The various intra college sports activities, NSS, NCC, Azadi Ka amrit mahatsav, Tree plantation etc. were organised in every semester and also more activities are planned/organised in upcoming semesters in a regular manner.	
6.		Internet, medical facilities in the college	1 & 2/4% & 29.4%	This institute has well established LAN as well as wi-fi connectivity in the whole college campus including girl's hostel. The internet speed was upgraded/installed up to 100 MBPS via lease line as well as fibre from BSNL for student and office use. For medical facilities, full time dispenser as well as separate first aid boxes are available in the college.	
7.		Placement Assistance	0&1/2.4 & 4.8	In this context, training and placement officer has been regularly working and the institute has signed MOU with more than 10 pharmaceutical industries for facilitating students industrial training and placement and industries-academic interactions.	


8.	Alumni Feedback	Placement Assistance	0 & 1/ 6.3% & 4.2%	-----Do-----
9.	Parents Feedback	Teaching/learning system	2/5%	The institute has already well-established academic infrastructure, yet due to shortage of teaching staff, there may be same feel of dissatisfactory. The staff process of recruitment have been initiated and one assistant professor has joined the institute.

Submitted for favor of your kind information and further necessary action please.

Thanking you,

*Encls: - Feedback analysis report*

Yours faithfully

  
**Raneev Thakur**  
 Assistant-Professor  
 Govt. College of Pharmacy  
 Rohru, Distt. Shimla, H.P.